

WARNING

- Read the entire contents of this manual before attempting to operate the toe jack.
- This toe jack was designed and intended for use by properly trained personnel only. If you are not familiar with the proper and safe use of a toe jack, do not use this jack until proper training and knowledge have been obtained.
- Use the jack on hard, level surfaces only. Never use the jack on a slope or soft surfaces.
- Never load the toe jack beyond its rated capacity.
- Support raised loads with appropriate supports. Never use the toe jack as a sole means of support.
- Keep arms, legs, fingers, and toes clear of a lifted load at all times.
- Do not add weight to a supported load.
- Keep lifted loads as low as possible.
- Remove the handle from the toe jack body when not in use. Never use any handle other than the one designed for the toe jack.
- Retract the ram completely when finished using the jack. An extended ram might get damaged.
- Do not lower a load suddenly and stop in the middle of a lift. Damage to the jack may occur.
- Replace the warning label on the jack if it is damaged or unreadable.
- Failure to comply with all these warnings may cause serious injury and/or damage to property.

WARNING

Slowly turn the release valve! Turning the release valve quickly makes the load fall rapidly and may lead to the loss off the load or damage to the jack!
Failure to comply may cause serious injury and/or property damage!

Part#	Capacity (tons)	Toe Height Min. (in.)	Head Height min. (in.)	Stroke (in.)	Toe Size WxL (in.)	Base Size WxL (in.)	Weight (lbs.)
HTJ-2	2	3/4	9-1/4	4-7/16	2 x 2	7-3/8 x 5-5/8	22
HTJ-5	5	1	11-5/8	4-3/4	3 x 2-1/4	10-3/4 x 5-5/8	53
HTJ-10	10	1-1/4	13	5-1/2	3-1/4 x 2-1/4	11-5/8 x 9-1/2	84
HTJ-15	15	1-1/4	13-1/2	7	4 x 2-3/8	11-7/8 x 10	106
HTJ-25	25	1-5/8	15-3/8	4-5/8	5-5/8 x 2-3/4	14 x 11	177

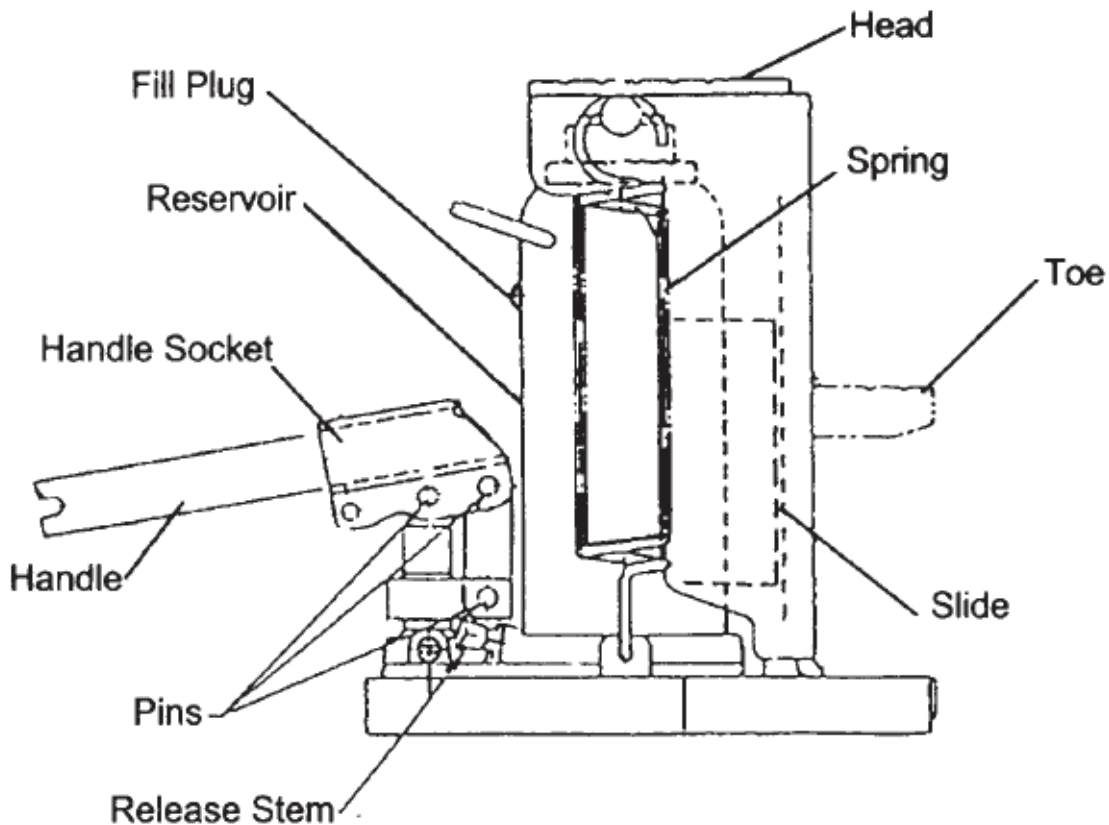
Operation

To raise the jack:

1. Insert the end of the handle into the release stem.
2. Turn the release stem clockwise completely to close the valve. Do not over tighten.
3. Insert the handle into the handle socket.
4. Pump the handle to raise the load.

To lower the jack:

1. Insert the end of the handle into the release stem and turn slowly counter-clockwise to open the valve.
2. Do not turn the release valve around more than two complete revolutions.
3. When storing the jack, retract the ram completely and wipe off any dirt, oil, or other contaminants.



⚠ WARNING

Slowly turn the release valve! Turning the release valve quickly makes the load fall rapidly and may lead to the loss of the load or damage to the jack!
Failure to comply may cause serious injury and/or property damage!

 **WARNING**

Make sure no contaminants enter the cylinder when filling with oil! Never use any oil other than hydraulic jack oil to fill the cylinder!
Failure to comply may cause the jack to fail!

Lubrication

- Lubricate the pins with a few drops of machine tool oil monthly.
- Lubricate the slide with #2 lithium based grease monthly.
- **To fill the reservoir with oil:**
 1. Retract the ram completely.
 2. Remove the filler plug.
 3. Fill the reservoir with hydraulic jack oil to the bottom edge of the fill hole with the jack in the upright position.
 4. Replace the filler plug.
 5. Raise the ram to its full height and pump five or six times after the ram has reached its full height.
 6. Push the ram down completely.
 7. Push the filler plug sideways to let the trapped air bleed out.

Troubleshooting

Problem	Cause	Solution
Toe will not extend.	Release stem is open.	Close release stem completely.
	Dirt or crack in valve sealing section.	Clean and repair or replace.
Jack will not lift to full height.	Not enough or too much hydraulic jack oil in reservoir.	Fill reservoir with correct amount of hydraulic jack oil.
Toe extends but falls immediately.	Air in the system.	Press ram down to the lowest position and let air out by pushing filler plug sideways.
Handle pops up.	Delivery valve seal is damaged.	Replace delivery valve seal.
External oil leak.	Damage to top or bottom of reservoir, release stem, or pump.	Repair or replace.